



MONTHLY MEMBERSHIP PROGRESS REPORT

District 202 M

Results as of: 06/30/2019

GMT: CLIFFORD HEYWOOD

LOCATION NEW ZEALAND

GMT CA

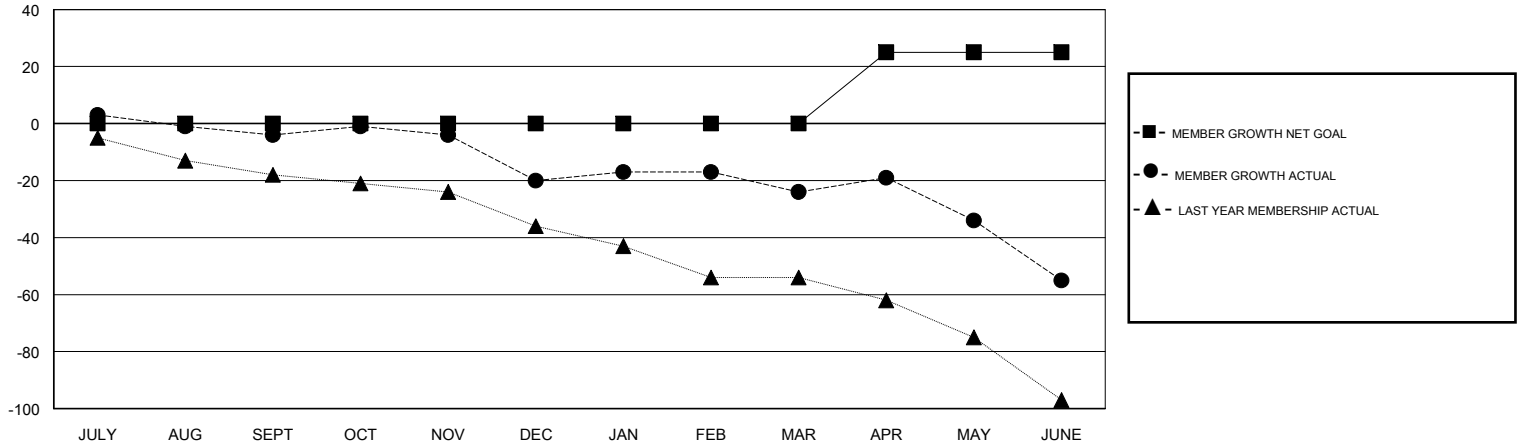
Clubs			
RESULTS FOR 2018-2019			
QUARTER	NEW CLUB GOAL	NEW CLUBS	DROPPED CLUBS
JULY/AUG/SEPT	0	0	0
OCT/NOV/DEC	0	0	0
JAN/FEB/MAR	0	0	0
APR/MAY/JUNE	1	0	0

Members			
RESULTS FOR 2018-2019			
QUARTER	MEMBER GROWTH NET GOAL	MEMBER GROWTH ACTUAL	DROPPED MEMBERS ACTUAL (including transfers)
JULY/AUG/SEPT	0	23	26
OCT/NOV/DEC	0	15	30
JAN/FEB/MAR	0	23	25
APR/MAY/JUNE	25	29	58

GOALS AND ACTUAL NEW CLUBS CUMULATIVE



GOALS AND ACTUAL MEMBERS CUMULATIVE



DROPPED CLUBS: 0	35 CLUBS OF 47 ADDED 1 OR MORE NEW MEMBERS	<u>GENDER DISTRIBUTION</u>	
DROPPED MEMBERS		MALE	717 (63.90%)
DECEASED	22	FEMALE	405 (36.10%)
CLUB CANCELLED	0	Women Percentage Fiscal Year Goal: 40%	
OTHER	116	TOTAL FAMILY UNIT MEMBERS	132
TOTAL	138	FAMILY MEMBERS PAYING HALF DUES	67

[CLICK HERE FOR CUMULATIVE MEMBERSHIP DATA](#)